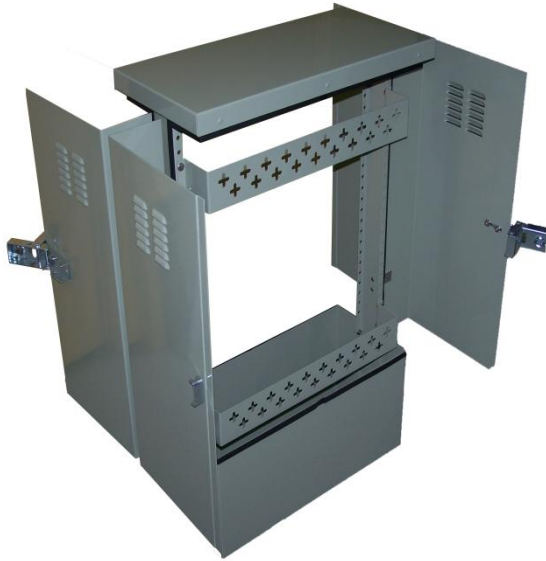


CP Pedestal Series

Cable Ready Pedestals



The **CP Pedestal Series** is designed for CATV distribution equipment. Designed specifically to better withstand environmental conditions, Inventronics' specialized CORR II process ensures that each enclosure is durably constructed and finished with an exceptional quality polyester powder coating. With room for taps, couplers, splitters, line extenders and amplifiers the CP Pedestal Series is a must have for your OSP Network. A variety of universal mounting brackets, amp-rods, stake kits and colors are available.



Universal Mounting Plate

Features

- 14ga Galvanized G90 Material
- Polyester Powder Paint
- Louvered Doors and Sides
- Bug Screen
- Padlock Provisions
- Tamper Proof Latches on Door Version
- Removable Doors
- Vertical Mounting Rails
- Temporary Drop Locations

Options

- Universal Mounting Plates
- Amp Rods
- 32"/42"/Anti-Frost Stakes

Applications

- Fibre
- Coax
- Joint Use



*CP104D with Amp-rod
Single Door*



*CP104 with V-Brkt
Removable Lid*

CP Pedestal Series

Inventronics Limited

1420 Van Horne Ave East / Brandon, MB Canada / R7A 7B6 /
O:204-728-2001 / F:204-726-0807 / www.inventronics.com



CP Pedestal Series

Lift-Off Data Sheet

The **CP Pedestal Series** is designed for CATV distribution equipment. Designed specifically to better withstand environmental conditions, Inventronics' specialized CORR II process ensures that each enclosure is durably constructed and finished with an exceptional quality polyester powder coating. With room for taps, couplers, splitters, line extenders and amplifiers the CP Pedestal Series is a must have for your OSP Network. A variety of universal mounting brackets, amp-rods, stake kits and colors are available.

Features

- 14ga Galvanized Construction
- Polyester Powder Paint
- Louvered Removable Lid
- Bug Screen
- Padlock Provisions
- Amp-Rod or V-Mounting Bracket Provisions
- Temporary Drop Locations

Ordering Guide

CP80 Pedestal
25"H x 8"W x 8"D
PN # 459001-1

CP104 Pedestal
37"H x 10"W x 10"D
PN # 459002-1

- Amp-Rod**
- V-Mounting Bracket**
- 32" Stake Kit**
- 48" Stake Kit**



CP Pedestal Series

Inventronics Limited

1420 Van Horne Ave East / Brandon, MB Canada / R7A 7B6 /
O:204-728-2001 / F:204-726-0807 / www.inventronics.com



CP Pedestal Series

Single Door Data Sheet

The **CP Pedestal Series** is designed for CATV distribution equipment. Designed specifically to better withstand environmental conditions, Inventronics' specialized CORR II process ensures that each enclosure is durably constructed and finished with an exceptional quality polyester powder coating. With room for taps, couplers, splitters, line extenders and amplifiers the CP Pedestal Series is a must have for your OSP Network. A variety of universal mounting brackets, amp-rods, stake kits and colors are available.

Features

- 14ga Galvanized Construction
- Polyester Powder Paint
- Removable Door
- Tamper-Proof Latch
- Padlock Provisions
- Screen Louvers
- Amp-Rod or V-Mounting Bracket Provision
- 2 Temporary Drop Locations

Ordering Guide

CP104D Pedestal
37"H x 10"D x 10"W
PN # 459101-1

CP106D Pedestal
37"H x 17"W x 10"D
PN # 459102-1

- Amp-Rod**
- V-Mounting Bracket**
- 32" Stake Kit**
- 48" Stake Kit**



CP Pedestal Series

Inventronics Limited

1420 Van Horne Ave East / Brandon, MB Canada / R7A 7B6 /

O:204-728-2001 / F:204-726-0807 / www.inventronics.com



CP Pedestal Series

Four Door Data Sheet

The **CP Pedestal Series** is designed for CATV distribution equipment. Designed specifically to better withstand environmental conditions, Inventronics' specialized CORR II process ensures that each enclosure is durably constructed and finished with an exceptional quality polyester powder coating. With room for taps, couplers, splitters, line extenders and amplifiers the CP Pedestal Series is a must have for your OSP Network. A variety of universal mounting brackets, amp-rods, stake kits and colors are available.

Features

- 14ga Galvanized Construction
- Polyester Powder Paint
- Removable Doors
- Tamper-Proof Latches
- Padlock Provisions
- Screened Louvers
- Universal Mounting Plates
- 2 Temporary Drop Locations

Ordering Guide

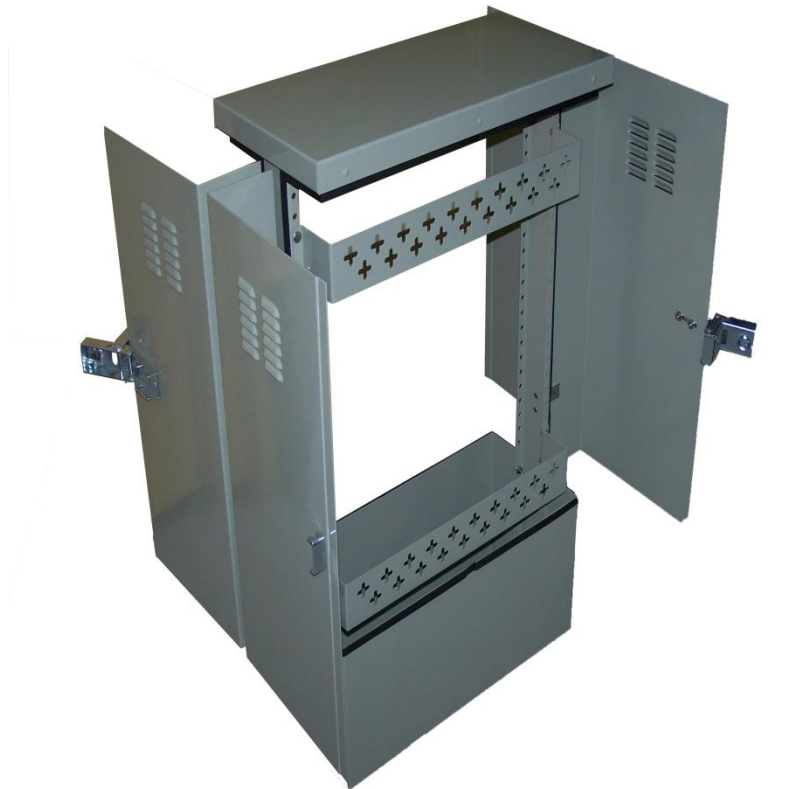
CP1016 Pedestal
37"H x 16"W x 10"D
PN # 459104-1

CP1024 Pedestal
37"H x 24"W x 10"D
PN # 459103-1

CP1024 Pedestal Pad-mount
37"H x 24"W x 10"D
PN # 459105-1

CP2400 Pedestal
47"H x 24"W x 10"D
PN # 459108-1

- Universal Mounting Plate**
- Universal Mounting Plate Offset**
- 48" Stake Kit**



CP Pedestal Series

Inventronics Limited

1420 Van Horne Ave East / Brandon, MB Canada / R7A 7B6 /
O:204-728-2001 / F:204-726-0807 / www.inventronics.com

