

# CP Pedestal Series

## Four Door Data Sheet

The **CP Pedestal Series** is designed for CATV distribution equipment. Designed specifically to better withstand environmental conditions, Inventronics' specialized CORR II process ensures that each enclosure is durably constructed and finished with an exceptional quality polyester powder coating. With room for taps, couplers, splitters, line extenders and amplifiers the CP Pedestal Series is a must have for your OSP Network. A variety of universal mounting brackets, amp-rods, stake kits and colors are available.

### Features

- 14ga Galvanized Construction
- Polyester Powder Paint
- Removable Doors
- Tamper-Proof Latches
- Padlock Provisions
- Screened Louvers
- Universal Mounting Plates
- 2 Temporary Drop Locations

### Ordering Guide

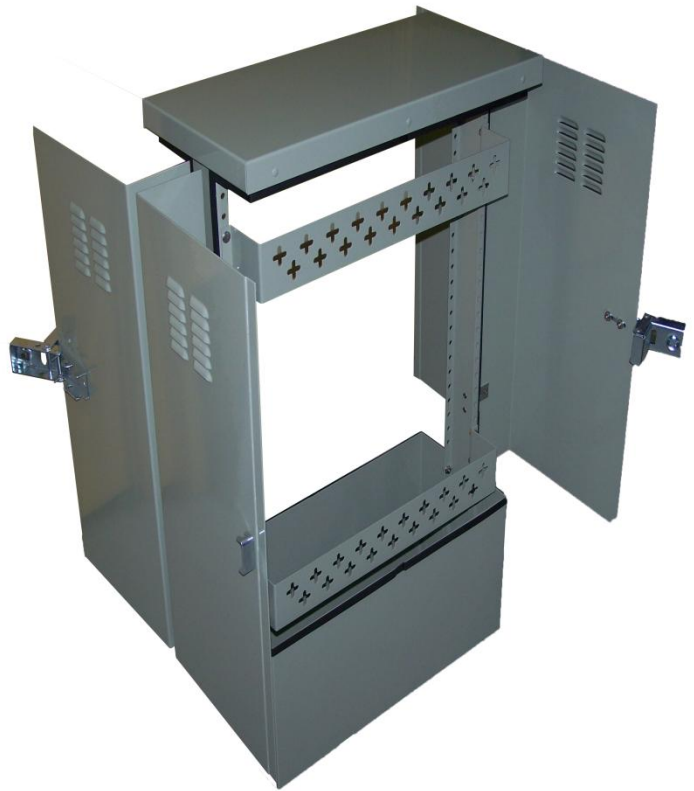
**CP1016** Pedestal  
37"H x 16"W x 10"D  
PN # 459104-1

**CP1024** Pedestal  
37"H x 24"W x 10"D  
PN # 459103-1

**CP1024** Pedestal Pad-mount  
37"H x 24"W x 10"D  
PN # 459105-1

**CP2400** Pedestal  
47"H x 24"W x 10"D  
PN # 459108-1

- Universal Mounting Plate**
- Universal Mounting Plate Offset**
- 48" Stake Kit**



## CP Pedestal Series

**Inventronics Limited**

1420 Van Horne Ave East / Brandon, MB Canada / R7A 7B6 / O:204-728-2001 / F:204-726-0807

